



# ANNUAL REPORT

**FISCAL YEAR**  
JULY 2021 - JUNE 2022



**Life Management Center**  
*Of Northwest Florida Inc.*

# LIFE MANAGEMENT CENTER OF NORTHWEST FLORIDA

## MISSION

To provide comprehensive, integrated care that promotes the health and quality of life of our community members.

## VISION

To inspire confidence and respect as a provider of comprehensive behavioral care and family counseling services. To be a valued partner in the alliances that promote the health and quality of life of our community and its members.

## LMC BOARD OF DIRECTORS 2021-22

Thelma Rohan, Chair  
Dr. Bret Johnson, Vice Chair  
James McCalister, Secretary  
Judy Harris, Treasurer  
Ashley Shoaf, Personnel Chair  
Dinah Crayton,  
Brian D'Isernia, Jr.  
Frank Merritt  
Timothy Myers  
James Sims  
Ken Thomas

## SENIOR MANAGEMENT

**Ned Ailes, M.S., LMFT**  
President and Chief Executive Officer

**Bill Dawn, CPA, MBA**  
Chief Financial Officer

**Eileen Booth, M.S., LMHC**  
Program Director, Family Services

**Theresa McDonald, M.S., LMHC**  
Program Director, Adult Services

**Retha M. Threatt**  
Chief Human Resources Officer

## WITH OUR GREATEST APPRECIATION

*To our outgoing board members, Mrs. Thelma Rohan and Mr. James Sims, thank you for your many years of dedicated service to Life Management Center. Our sincerest gratitude for your unwavering support, guidance, and invaluable leadership.*

## MEDICAL STAFF

**Barton Lewis, M.D.**  
Medical Director

**Family Services**  
Susan Balk, M.D.  
Nadra Chaudhary, M.D.  
Eneida Gomez, M.D.  
Joan Vojtkofsky, APRN

**Adult Services**  
Kevin Amiri, D.O.  
Philip Burnett, D.O.  
Jennifer Davis, APRN  
Cheryl Elder, APRN  
Pam Faille, APRN  
Patricia Franko, APRN  
Angelo Herbu, APRN  
Rickman Powers, APRN

Dear Friends,

“A healthier mind, a better you”—it’s not just a slogan, but it’s the heart of what we do. For those struggling with mental wellness, the courageous journey towards recovery begins by reaching out for help. For almost 70 years, Life Management Center of Northwest Florida has been there to help thousands take the first step on their journey towards improved mental health.

We remain committed to providing accessible and high-quality mental health care. This annual report is a glimpse into the services we provide, reflects on our successes, and showcases our continued commitment to providing comprehensive, integrated care that promotes the health and quality of life of our community members. Here are just a few ways we honored our mission during the last fiscal year:

- 1 **Provided mental health and counseling services to approximately 7,700 adults and children.**
- 2 **Delivered psychiatric care to 5,628 individuals.**
- 3 **Saw an increased need for our Mobile Response Team, and utilization of MRT services increased by 47%.**
- 4 **Helped 750 individuals in mental health crisis through our Crisis Stabilization Unit.**
- 5 **Placed 137 children in adoptive homes.**
- 6 **The Life Management Foundation hosted the inaugural Festival En Blanc fundraising event which raised over \$30,000 to support us in helping our community.**

As we look ahead to next year with hope and optimism, we are excited for new opportunities and expanded mental health services for our community. I want to thank our staff, donors, friends, and partners for your support, your confidence in our work, and for affecting positive changes in the lives of the thousands we serve each year. On behalf of our Board of Directors and dedicated employees, we thank you for your continued support of Life Management Center of Northwest Florida.

Sincerely,



**Edwin R. (Ned) Ailes, M.S., LMFT**  
President & CEO



*“I am very proud of our achievements and the impact we had in the communities we serve. None of this would have been possible without the tremendous efforts of our dedicated team. We owe these successes to our team of employees who work very hard every day with the best interests of our clients in mind.”*

**NED AILES, M.S., LMFT**  
President & CEO

# OUR IMPACT

68

Years serving Northwest Florida

7,687

Total children and adults provided with mental health services

5,628

Individuals receiving psychiatric services

750

Total served in our Crisis Stabilization Unit

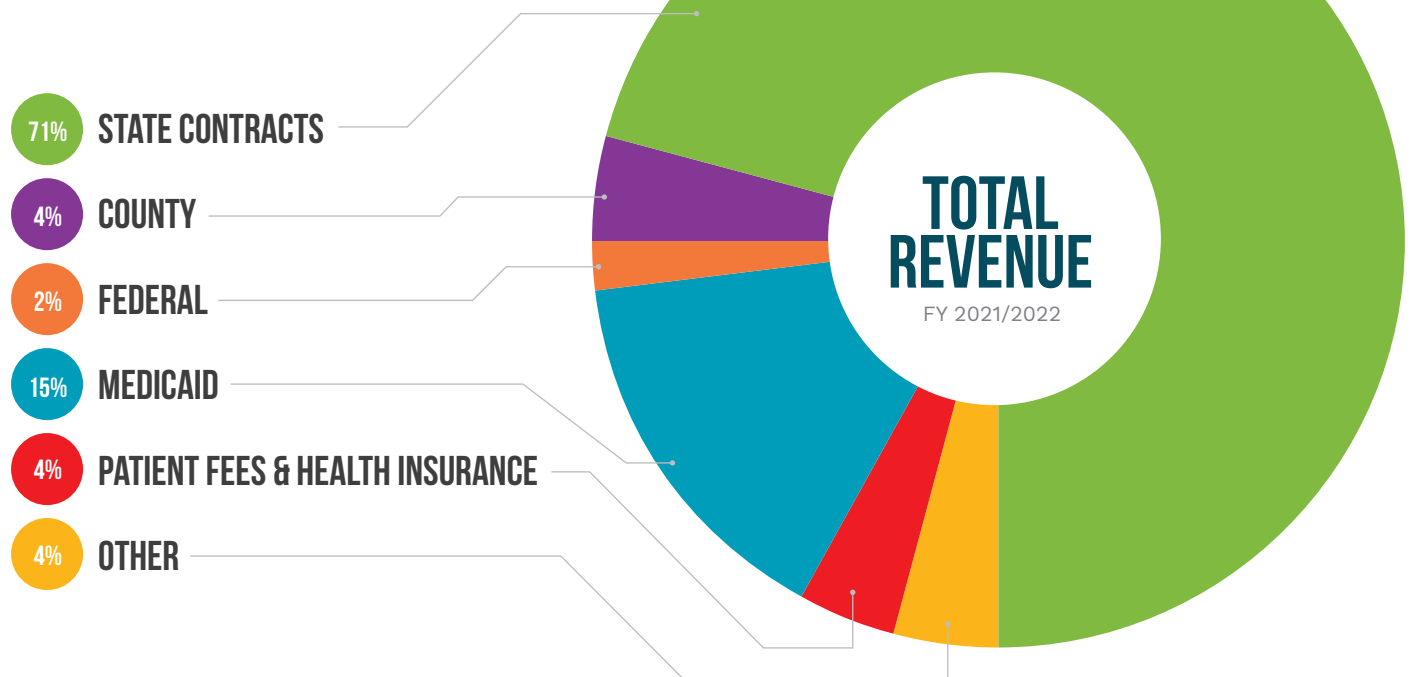
1,103

Total visits & calls to our Emergency Services

17

Programs recognized with CARF International Accreditation

## OPERATING REVENUE



88

Families served through  
Healthy Families and free of  
child abuse and neglect

100%

Children in families  
completing the Healthy  
Families program with no  
signs of child maltreatment

120

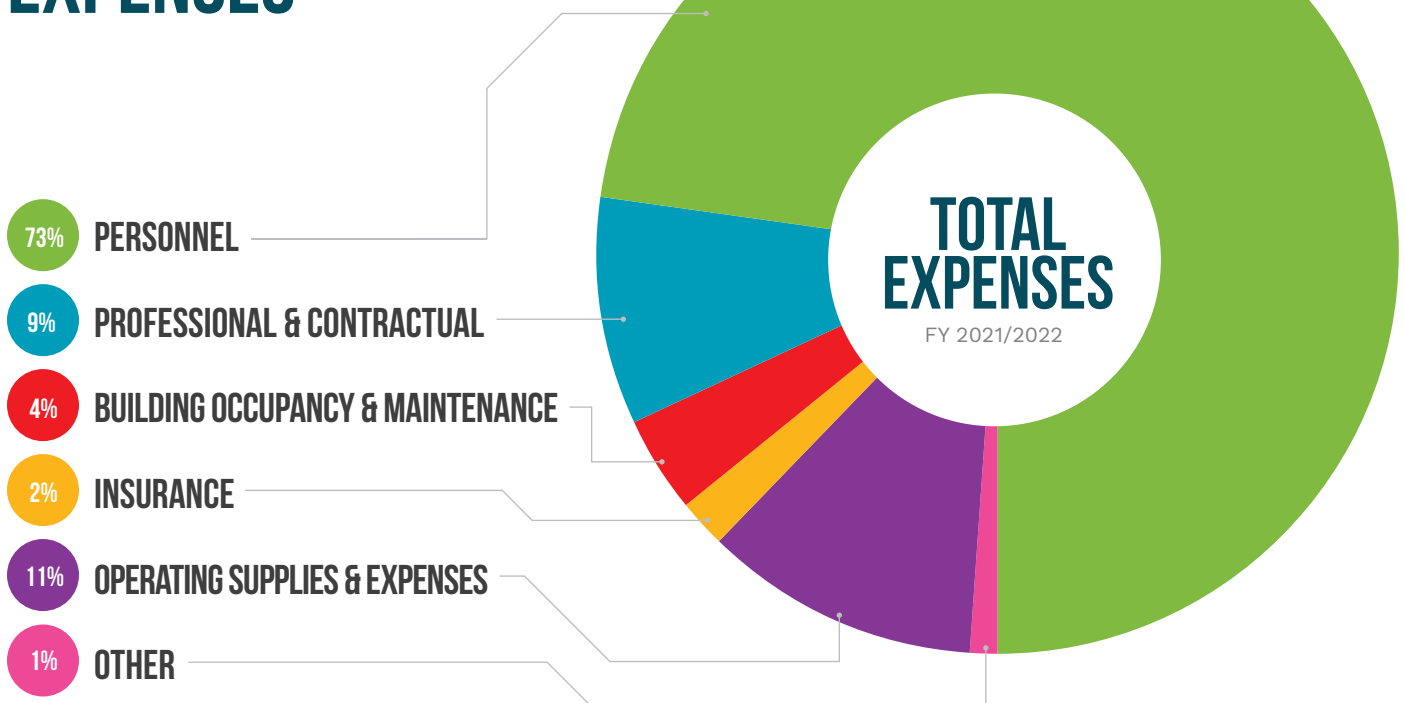
Individuals served in our  
FACT program

192

Total served in our  
Primary Care Clinic



## EXPENSES



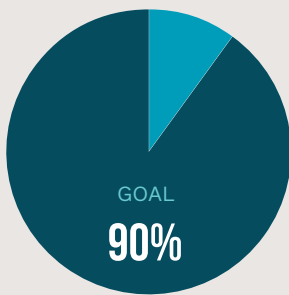
# DELIVERING RESULTS

Each year we have targets to reach as we provide services to the community. These targets help ensure our clients are receiving services in a way that is most beneficial to them.

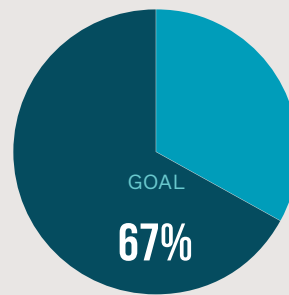
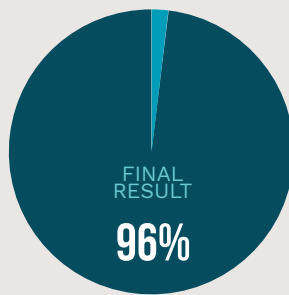


**MORE THAN 84% OF PATIENTS SURVEYED WERE SATISFIED WITH THEIR CARE**

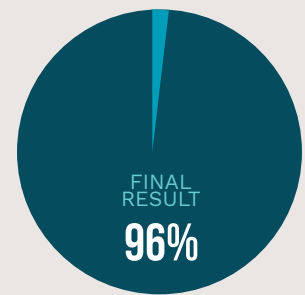
## ADULTS WHO ARE LIVING IN STABLE HOUSING



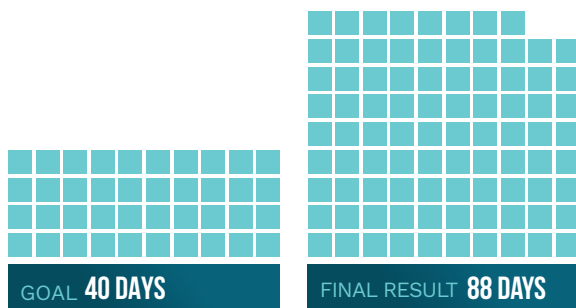
Adults with chronic mental health problems



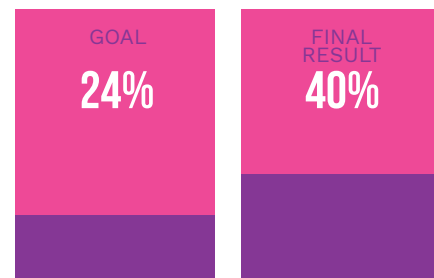
Adults involved with the courts



## ADULTS WITH EMPLOYMENT

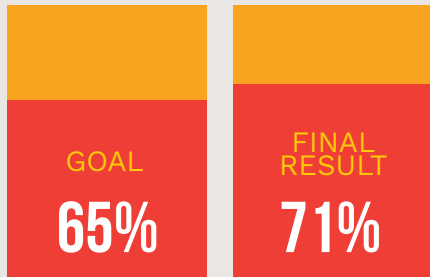


Annual average days worked for pay



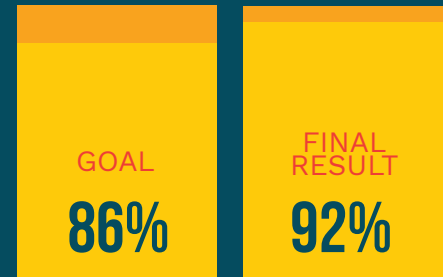
Percent of individuals competitively employed

## PERCENT OF CHILDREN FUNCTIONING BETTER AT HOME, SCHOOL & IN THE COMMUNITY



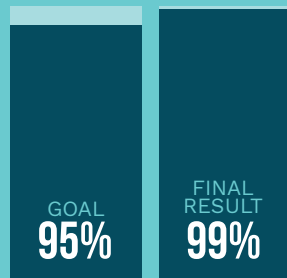
Children with severe emotional difficulties

## PERCENT OF SCHOOL DAYS ATTENDED BY CHILDREN

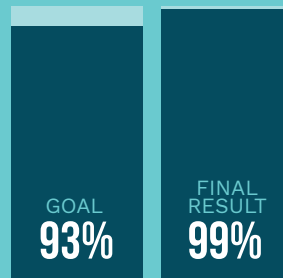


Children with severe emotional difficulties

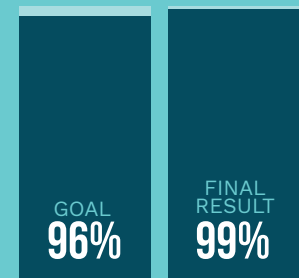
## YOUTH LIVING IN STABLE HOUSING



Children with emotional difficulties



Children with severe emotional difficulties



Children at risk of developing emotional difficulties

## MOBILE RESPONSE TEAM 2021-2022 IMPACT

1,253

Total Calls

47%

MRT Utilization Increase from FY 2020-2021

31%

Night and Weekend Utilization Rate

864

Total Baker Act Diversions

561

Baker Act Diversions from Community Interventions

303

Baker Act Diversions from School Interventions

69%

MRT Baker Act Diversions Success Rates

# NATIONAL ADOPTION DAY

November 18, 2021



For over two decades, National Adoption Month has been celebrated every November in communities across the country. National Adoption Month is about spreading awareness, to celebrate the families who have grown through adoption, and to recognize the many children who are still waiting for forever families.

This past November, Life Management Center celebrated as eight children from our community were adopted by seven local families in a special ceremony recognizing National Adoption Month. The adoptions were simultaneously finalized and then the newly formed families along with adoption team members and community partners were honored with a special celebration reception themed “Found My Missing Pieces.”



Each year, Life Management Center contracts with NWF Health Network and the Department of Children and Families to provide adoption services for children that are placed for adoption through the child welfare system. The children who are available for adoption are of all ages and are seeking individuals who are committed to making them a part of their forever family. During the 2021/2022 fiscal year, the Life Management Center adoptions team helped place a total of 137 children in forever homes.

Every child deserves to live and grow in a loving, caring, and supportive home. We celebrate with the families that grew by adoption this year and continue to raise awareness about the urgent need for permanent homes for children and young people in foster care.



# ADOPTIONS

Life Management Center provides adoption services through contracts with Northwest Florida Health Network. In the last fiscal year, a total of 137 children were placed in forever homes with assistance from our adoptions team.

## NUMBER OF CHILDREN PLACED IN ADOPTIVE HOMES BY COUNTY

55

Bay



14

Calhoun



14

Jackson



5

Gulf



9

Washington



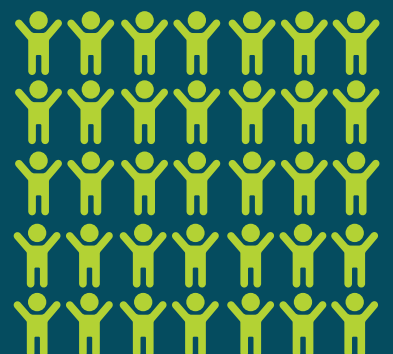
5

Holmes



35

Out of County/State



# THE LIFE MANAGEMENT FOUNDATION



The Foundation held the inaugural Festival en Blanc on April 29, 2022. The worldwide phenomenon inspired this event with French origins, Diner en Blanc. At this mysterious "Dinner in White," table sponsors and their guests dressed all in white and gathered at a secret location, which was revealed only hours before the event. The evening was filled with visually breathtaking table displays and spectacular moments, including waving a white cloth napkin to mark the beginning of dinner and the lighting of sparklers signifying the dance floor was open. The inaugural year was a huge success. Guests experienced an unforgettable evening of elegance, beauty, and magic; over \$30,000 was raised to help support Life Management Center.

## FESTIVAL *en blanc*

### FOUNDATION BOARD MEMBERS

- Lori Bates, Board Chair
- Tricia Berry
- Scott Clemons
- Carolyn Cramer
- Pam Cramer
- Maria D'Isernia
- Ben Lee
- Boopie McInnis
- Thelma Rohan
- Ray Palmer



# THANK YOU FESTIVAL EN BLANC SPONSORS

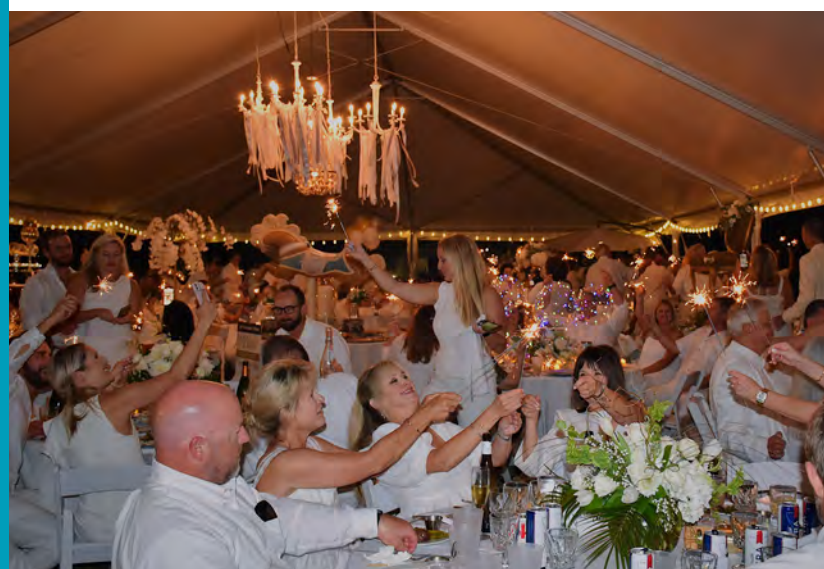


## PRESENTING SPONSORS

The D'Isernia Family  
 Billy Stevenson of Raymond James  
 Thelma and Michael Rohan  
 Dr. Michael and Mimi Morrow

## TABLE SPONSORS

Bill Cramer Chevrolet Cadillac Buick GMC  
 Blackwell Insurance  
 Brown & Brown Insurance  
 Florida Power & Light  
 George & Dorothy McInnis Family Foundation  
 Hand Arendall Harrison Sale  
 Jason Shoaf for State Representative  
 Kennon Dental Associates  
 Laura & Griff Griffiths  
 Laura & Tradd McDaniel (Merrill Lynch)  
 Lawnsapes of Bay County  
 Pam & Mike Walsingham  
 Panhandle Engineering  
 Stamps Family Dentistry  
 Syfrett, Dykes and Furr  
 Tonie's Dance Workshop  
 Trumbull Family Companies  
 Vittles Companies Inc.



# PRIMARY CARE

*Making an Impact*



It is easy to become so focused on treating a mental illness that physical health is often neglected. However, having a healthy body contributes to emotional recovery. Individuals with serious mental illnesses have much higher rates of chronic diseases, poor diet, and tobacco use, which ultimately leads to a shortened life expectancy. Despite these risks, many with mental illnesses seldom, if ever, receive preventative health care due to lack of income and resources or due to fear of discrimination because of their mental illness or substance use diagnosis.

Life Management Center saw an opportunity to intervene and established an on-site Integrated Primary Care Clinic. Having the clinic on site creates a greater opportunity for patients to receive the care they need and allows primary care providers to effectively collaborate with the patients' psychiatrists and counselors. This close relationship has resulted in enhanced treatment outcomes, fewer emergency room visits and improved overall health for our patients.

When the clinic first opened 8 years ago, services were provided one day per week. Now, due to increased demand, primary care services are offered daily. The clinic is funded entirely through donations and grants and our ability to provide and sustain increased services is due to the generous support of our community.

## PRIMARY CARE SUPPORTER

**The Integrated Primary Care Clinic received \$15,000 from the Central Panhandle Association of Realtors through proceeds from the Annual Festival of Trees Event.**





“We looked at the number of patients that followed through with their primary care referrals and that number was only 34%. That’s not good enough. Having primary care on site creates easier access and encourages adherence to both physical and mental health treatments. This clinic provides an invaluable service to the patients we serve. We are very thankful for the community’s continued support of our Integrated Primary Care Clinic.”

— **Dr. Barton Lewis**  
LMC Medical Director

## PRIMARY CARE SUPPORTER



PROUDLY SUPPORTED BY:



**192**  
**Patients Served**

**359** Total Patient Services

**81** New Patients

**61%**  
FEMALE

**39%**  
MALE

**20-70**  
AGE RANGE

**44**  
AVERAGE AGE

## PRIMARY CARE SUPPORTER

The Bay Health Foundation awarded a \$20,000 grant to the Integrated Primary Care Clinic.



Pictured L-R Lori Bates, LMC Foundation Board Chair, Thelma Rohan, LMC Board of Directors Chair and Foundation Board Member, Ned Ailes, President & CEO, Karen Thomason and Dan Morgan, Bay Health Foundation.



## HEALTHY FAMILIES PARENT CAFÉ

The Healthy Families program hosts a quarterly Parent Café. This is a time for parents to come together to learn valuable skills and activities that help strengthen the relationship between parents and children. Guest reader Michael Harris along with FLOW (Free Library on Wheels) from the Bay County Public Library helped parents learn to interact with books and make reading more exciting for children.

## S.P.A.R.E. SUICIDE PREVENTION WALK

LMC team members and their families participated in the 9th Annual S.P.A.R.E. Bridge of Hope Walk. S.P.A.R.E. (Suicide, Prevention, Awareness, Response and Education) is a coalition of mental health providers and suicide survivors working to bring awareness to Suicide Prevention.



## HOLIDAY BLESSINGS

The Panama City Seventh Day Adventist Church chose LMC as the recipient of their church toy drive and donated hundreds of gifts. The children in our programs were blessed by their kindness with toys, books, games, and encouraging cards.

## MAKING A DIFFERENCE

### Client Testimonials

“I can’t thank you enough for being there for us. I was scared, but you took us under your wing and made sure we had the support we needed. It was so comforting to know you were there.”

–Mother of a child in Gulf County CAT program

“From the very first day, I have had support and help from the team. Any issue or problem that has come up they are there to help or de-escalate. Even if I just need to vent or get advice, they are extremely supportive. This group is truly focused on doing the best for our children.”

–Xaundra Holmes, Therapeutic Foster Parent

“I appreciate how tentative you have been to me and my family and that my daughter is getting as much time as she needs to get back to stable. You are all a Godsend.”

–Parent of adult child receiving care in the Crisis Unit



## PINWHEELS FOR PREVENTION

Every April LMC participates in Pinwheels for Prevention in recognition of Child Abuse Prevention Month by planting Pinwheels at the entrance of our main campus. The blue and silver pinwheel is a reminder of the happy childhoods and bright futures that all children deserve.

## BREAK THE STIGMA

LMC represented the United Way as an affiliated agency at the Bay County Chamber First Friday event. Our team is working hard to “Break the Stigma” regarding mental health and bring awareness to the importance of mental wellness.



## REPRESENTATIVE JAY TRUMBULL VISITS LMC

LMC was proud to host Representative Jay Trumbull for a tour of our campus and to showcase the valuable services LMC provides to the communities we serve.



“I actually feel like a real person here. The staff jokes with me, it makes me feel better. Other places I was treated like an outcast. Ya’ll get it.”

–Patient receiving care in the Crisis Unit

“You’ve been a shoulder to cry on and never judged me or my situation. The positive words you always give when I am down provides me with the comfort I need.”

–Patient in Adult Services

“The care my son received makes me want to be sure he receives his outpatient treatment. His care was exceptional. I can count on you for information which is something we haven’t experienced before.”

–Parent of adult child receiving care



# Life Management Center

*Of Northwest Florida Inc.*

## Bay County - Main Campus

525 East 15th Street  
Panama City, FL 32405

## Calhoun County

16869 N.E. Pear Street  
Blountstown, FL 32424

## Gulf County

309 Williams Avenue  
Port St. Joe, FL 32456

## Holmes/Washington County

310 Byrd Avenue  
Bonifay, FL 32425

## Jackson County

4094 Lafayette Street  
Marianna, FL 32446

## lmccares.org

(850) 522-4485  
(888) 785-8750 Toll-Free



[facebook.com/lifemanagementcenter](https://facebook.com/lifemanagementcenter)



[youtube.com/LMCCares](https://youtube.com/LMCCares)



**NWF** Health Network



Sponsored by Life Management Center of Northwest Florida, Inc., Northwest Florida Health Network and the State of Florida, Department of Children and Families.

A COPY OF THE OFFICIAL REGISTRATION AND FINANCIAL INFORMATION MAY BE OBTAINED FROM THE DIVISION OF CONSUMER SERVICES BY CALLING TOLL-FREE (800-435-7352) WITHIN THE STATE. REGISTRATION DOES NOT IMPLY ENDORSEMENT, APPROVAL, OR RECOMMENDATION BY THE STATE. REGISTRATION #CH533